



Hermit Cabin



Reprinted from
the pages of
*A Natural System
of House Design*
by Charles G. Woods, AIA

Construction Drawings

This is the only house in this book that is older than four years. I designed this over ten years ago with Mac. The reason I include it is to show a set of construction drawings that Mac did for me on the module, in ink, and with great detail for a 500-square-foot house. It also shows the amount of work that goes into a good set of plans.

This set was sold to Popular Science magazine readers in an editorial article by Al Lee (who gave me a chance) in 1983. The one thing I would do differently now is to show every module line ending on the circle with a letter or number in it – say A, B, C, etc., across and 1, 2, 3, etc., down. This way, any part of a complex plan or structure could be easily located. Instead of vague and subjective attempts to identify a part, you would refer to “the window at E, 5.” This is really simple for identifying details, too.

I did not invent this system but it is visually used for larger structures. For a more complex example, see the Senalik Residence shown in my previous book (with Mac), *Designing Your Natural House* (VNR, 1992). This also shows the amount of work that goes into even an architecturally designed cabin.

*Construction plans, as shown, available.

CHARLES G. WOODS, AIA & ASSOCIATES
65 Commercial Street • Honesdale, PA 18431 • USA
tel: 570.253.5452 e-mail: sp1noza@ezaccess.net
www.cgwaia.com





Hermit Cabin



Reprinted from
the pages of
*A Natural System
of House Design*
by Charles G. Woods, AIA



CHARLES G. WOODS, AIA & ASSOCIATES
65 Commercial Street • Honesdale, PA 18431 • USA
tel: 570.253.5452 e-mail:sp1noza@ezaccess.net
www.cgwaia.com

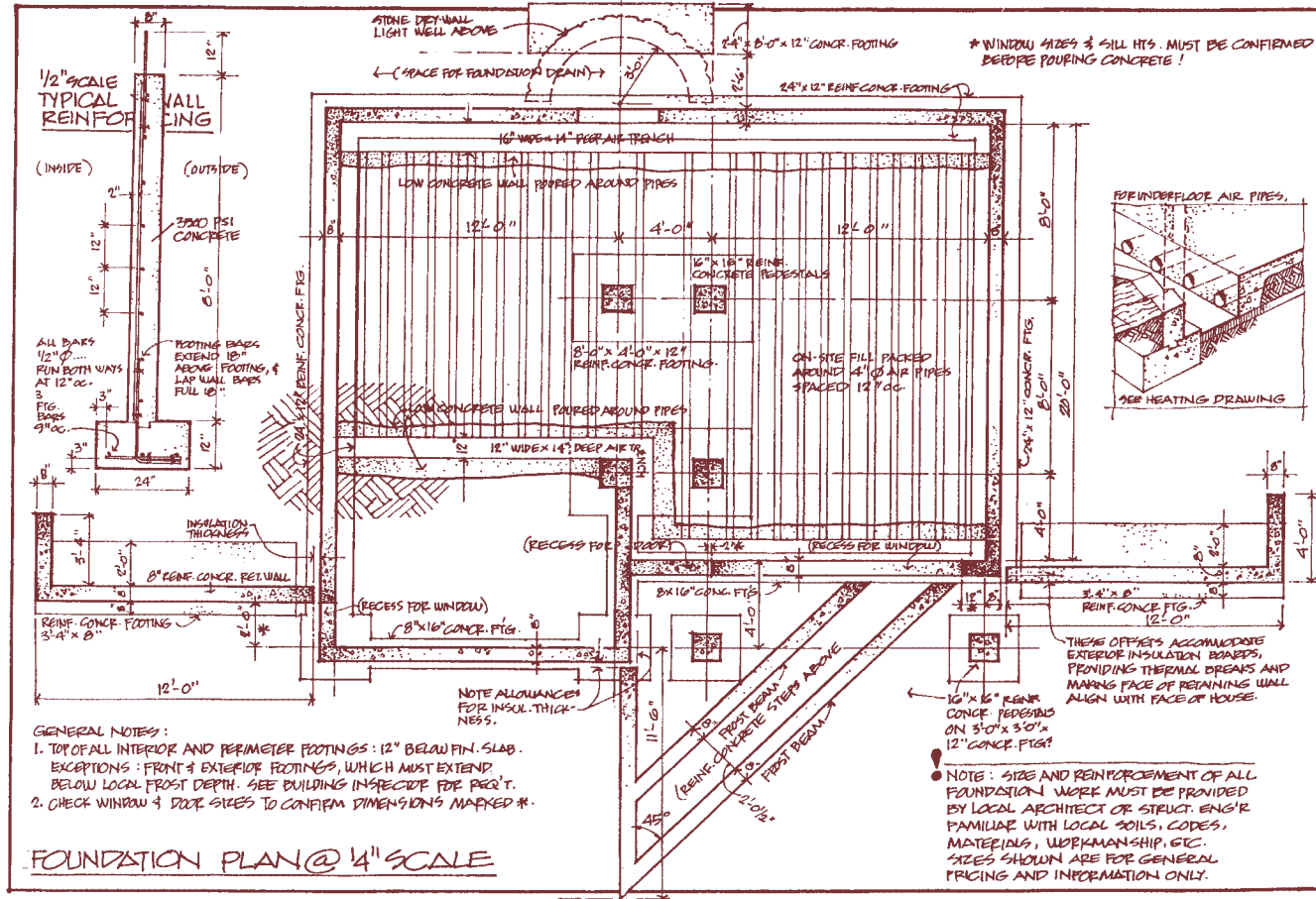




Hermit Cabin



Reprinted from
the pages of
*A Natural System
of House Design*
by Charles G. Woods, AIA



Natural Architecture
designed by: Charles G. Woods

CHARLES G. WOODS, AIA & ASSOCIATES
65 Commercial Street • Honesdale, PA 18431 • USA
tel: 570.253.5452 e-mail: sp1noza@ezaccess.net
www.cgwaia.com

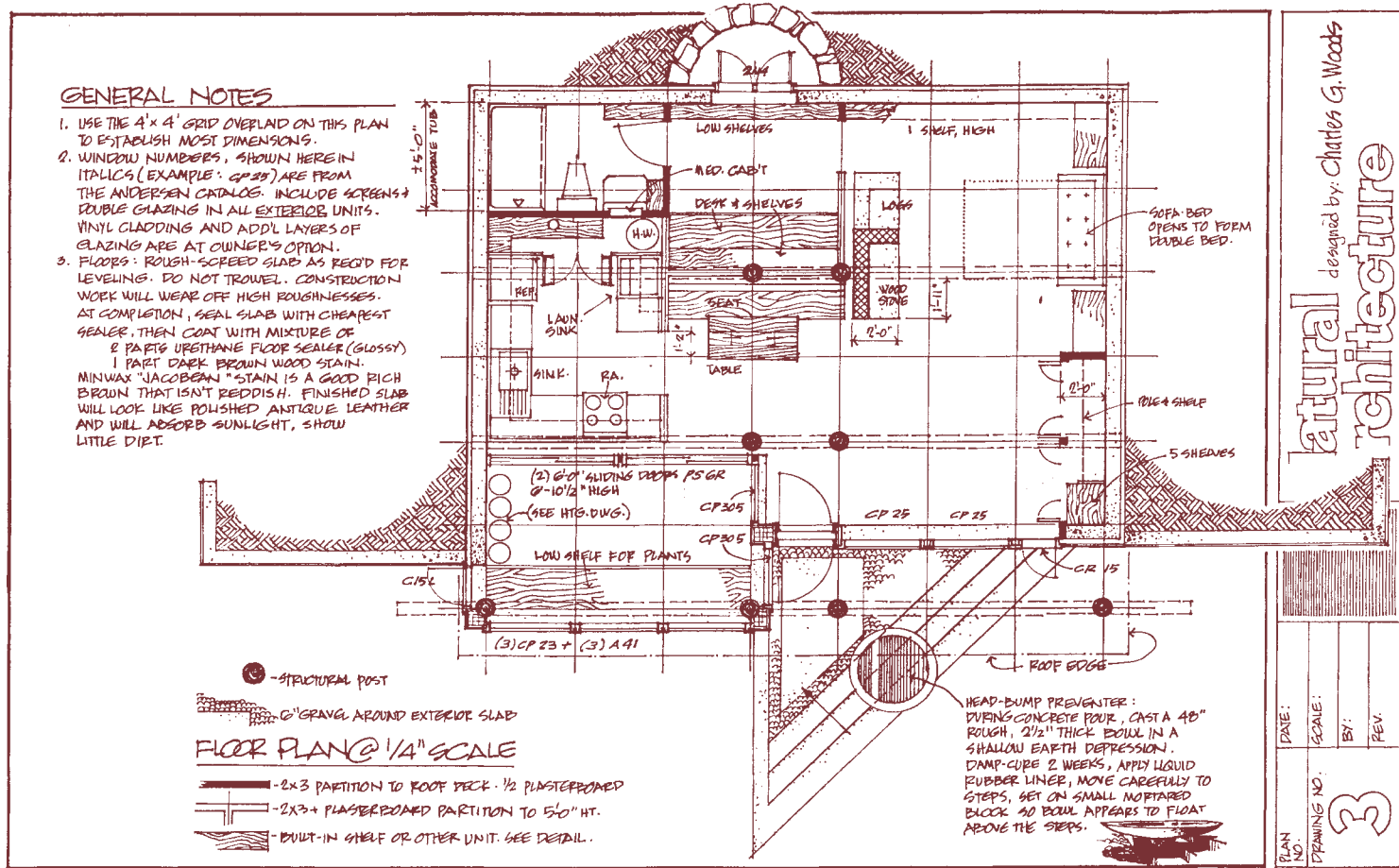




Hermit Cabin



Reprinted from
the pages of
*A Natural System
of House Design*
by Charles G. Woods, AIA



atural
rchitecture
designed by: Charles G. Woods

CHARLES G. WOODS, AIA & ASSOCIATES
65 Commercial Street • Honesdale, PA 18431 • USA
tel: 570.253.5452 e-mail: sp1noza@ezaccess.net
www.cgwaia.com

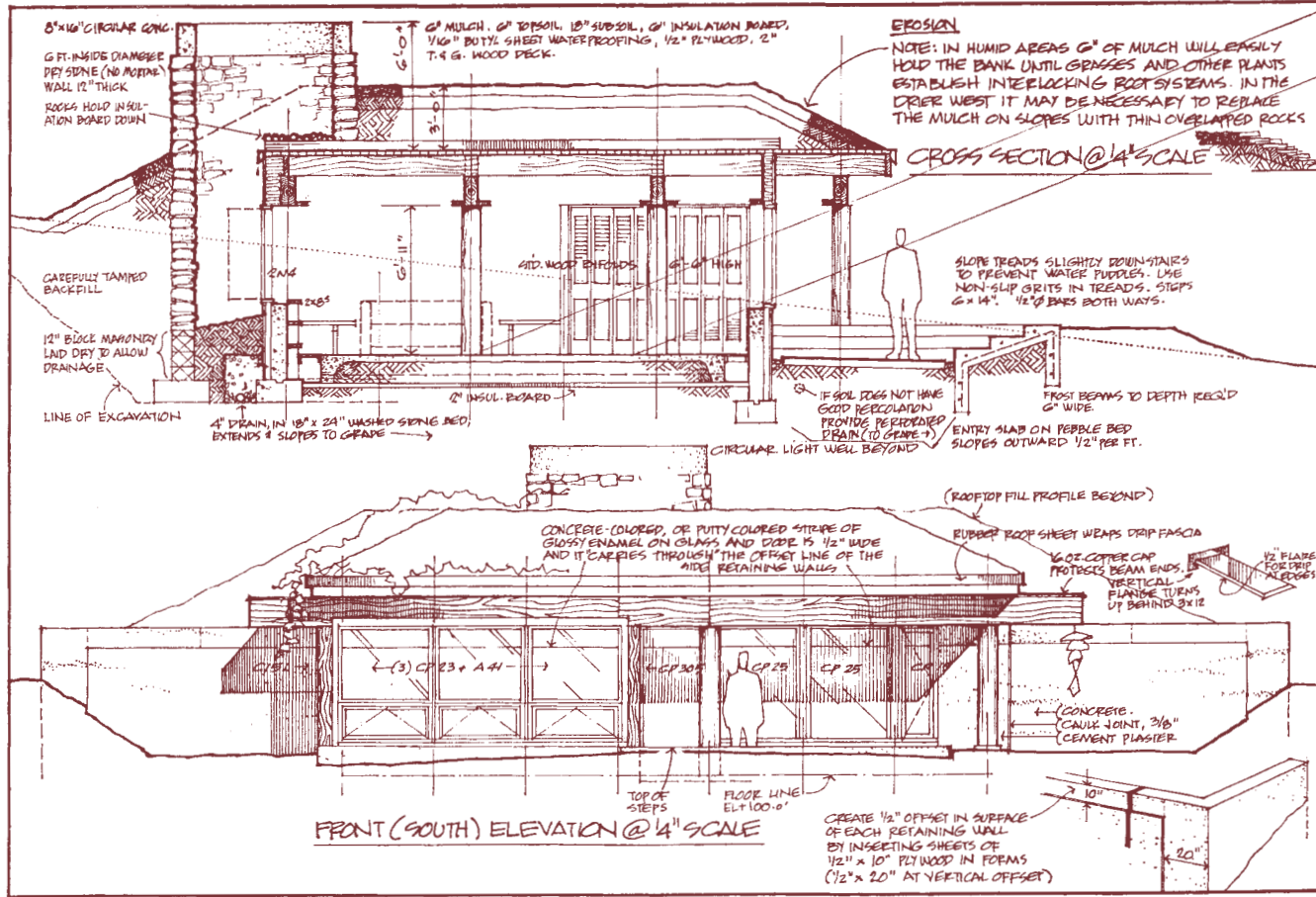




Hermit Cabin



Reprinted from
the pages of
*A Natural System
of House Design*
by Charles G. Woods, AIA



designed by: Charles G. Woods

**Natural
Architecture**

DATE:	SCALE:	BY:	REV.
PLAN NO.	DRAWING NO.	4	

CHARLES G. WOODS, AIA & ASSOCIATES
65 Commercial Street • Honesdale, PA 18431 • USA
tel: 570.253.5452 e-mail: sp1noza@ezaccess.net
www.cgwaia.com

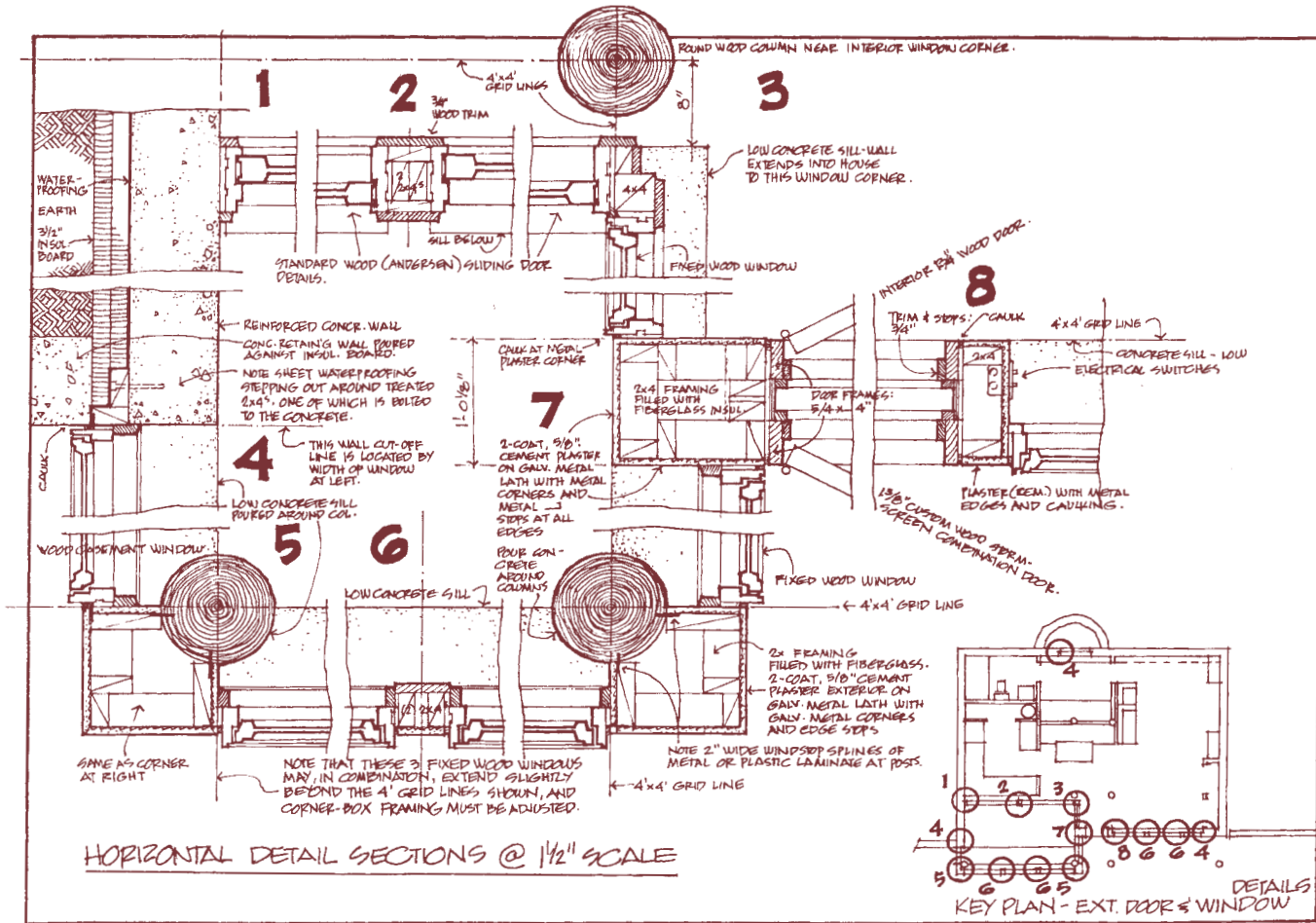




Hermit Cabin



Reprinted from
the pages of
*A Natural System
of House Design*
by Charles G. Woods, AIA



Natural Architecture
 designed by: Charles G. Woods

CHARLES G. WOODS, AIA & ASSOCIATES
 65 Commercial Street • Honesdale, PA 18431 • USA
 tel: 570.253.5452 e-mail: sp1noza@ezaccess.net
 www.cgwaia.com

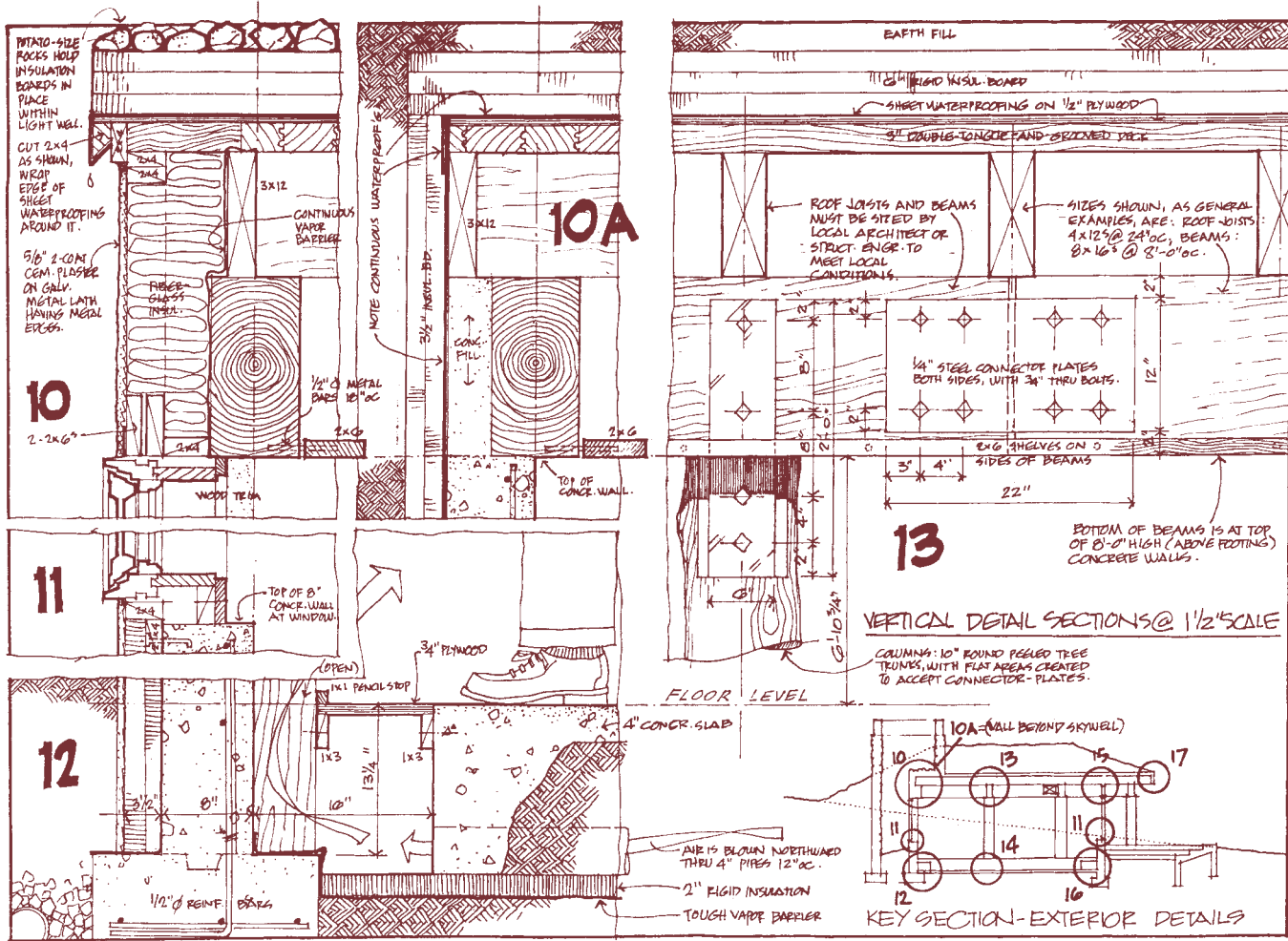




Hermit Cabin



Reprinted from
the pages of
*A Natural System
of House Design*
by Charles G. Woods, AIA



designed by: Charles G. Woods

Natural Architecture

DATE:	SCALE:	BY:	REV.
PLAN NO.	DRAWING NO. 6		

CHARLES G. WOODS, AIA & ASSOCIATES
65 Commercial Street • Honesdale, PA 18431 • USA
tel: 570.253.5452 e-mail: sp1noza@ezaccess.net
www.cgwaia.com

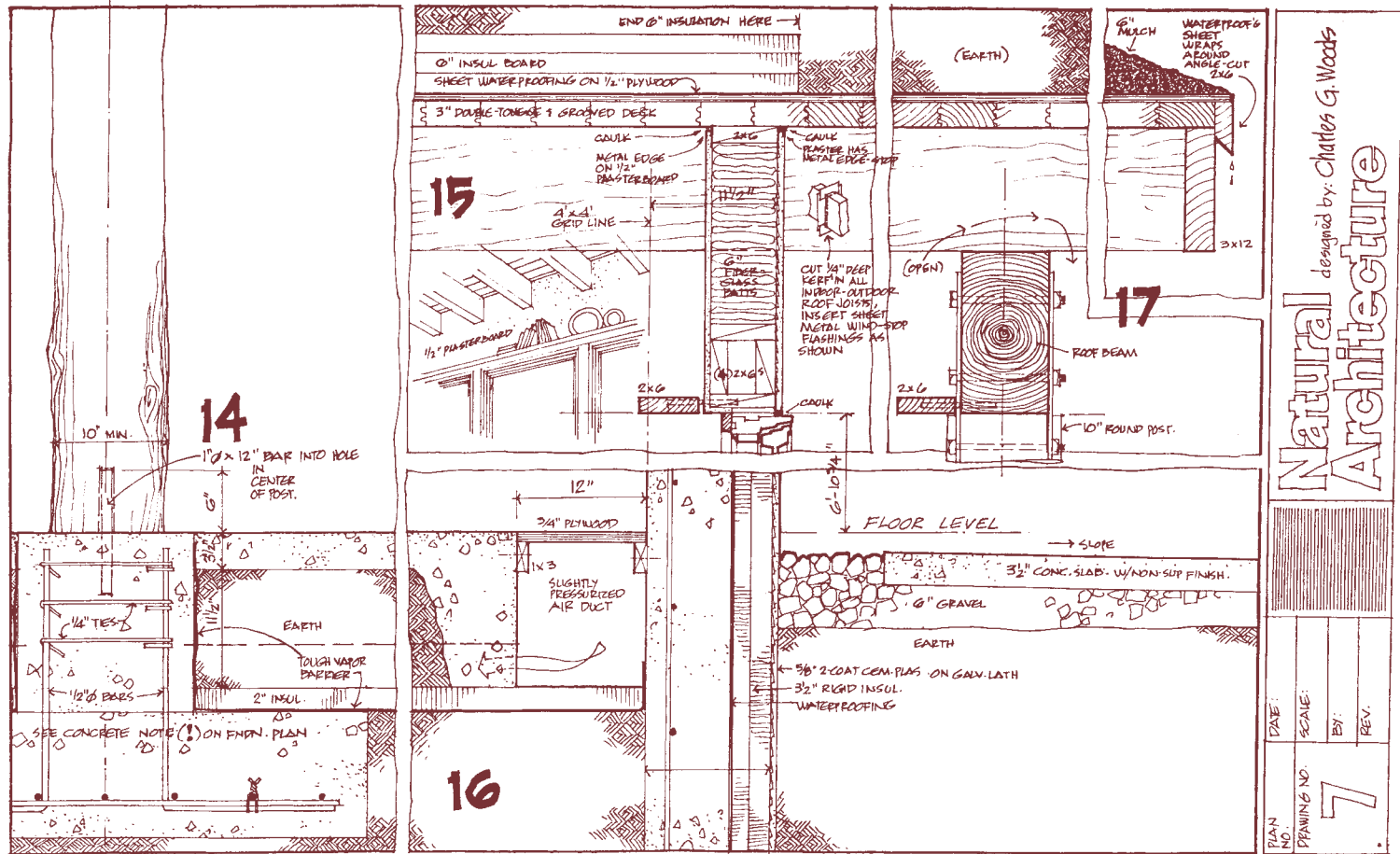




Hermit Cabin



Reprinted from
the pages of
*A Natural System
of House Design*
by Charles G. Woods, AIA



Natural Architecture
designed by: Charles G. Woods

CHARLES G. WOODS, AIA & ASSOCIATES
65 Commercial Street • Honesdale, PA 18431 • USA
tel: 570.253.5452 e-mail: sp1noza@ezaccess.net
www.cgwaia.com

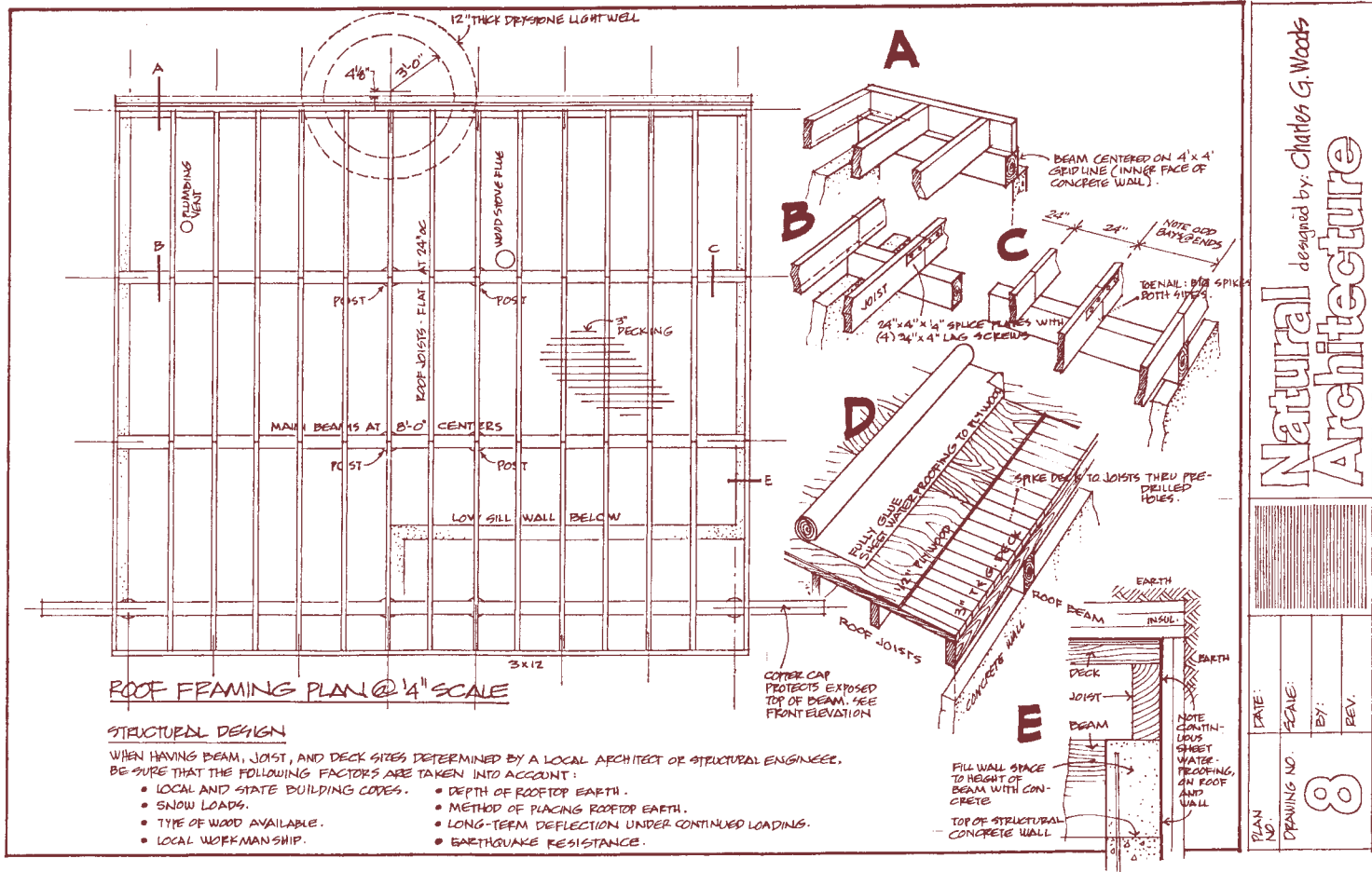




Hermit Cabin



Reprinted from
the pages of
*A Natural System
of House Design*
by Charles G. Woods, AIA



designed by: Charles G. Woods
**Natural
Architecture**

DATE:	SCALE:	BY:	REV.
PLAN NO.	DRAWING NO.	8	

CHARLES G. WOODS, AIA & ASSOCIATES
65 Commercial Street • Honesdale, PA 18431 • USA
tel: 570.253.5452 e-mail: sp1noza@ezaccess.net
www.cgwaia.com

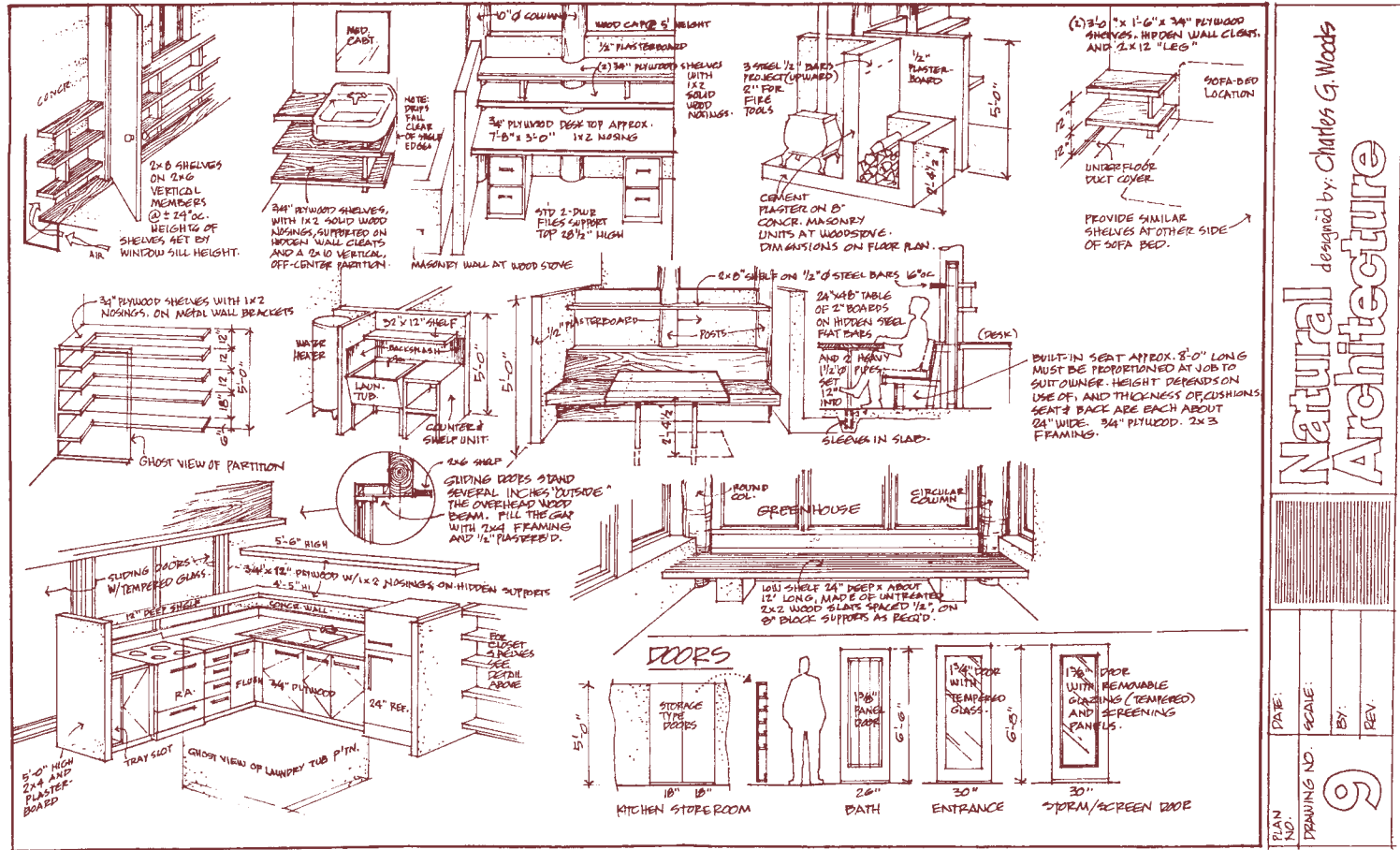




Hermit Cabin



Reprinted from the pages of *A Natural System of House Design* by Charles G. Woods, AIA



Natural Architecture designed by: Charles G. Woods

CHARLES G. WOODS, AIA & ASSOCIATES
65 Commercial Street • Honesdale, PA 18431 • USA
tel: 570.253.5452 e-mail: sp1noza@ezaccess.net
www.cgwaia.com

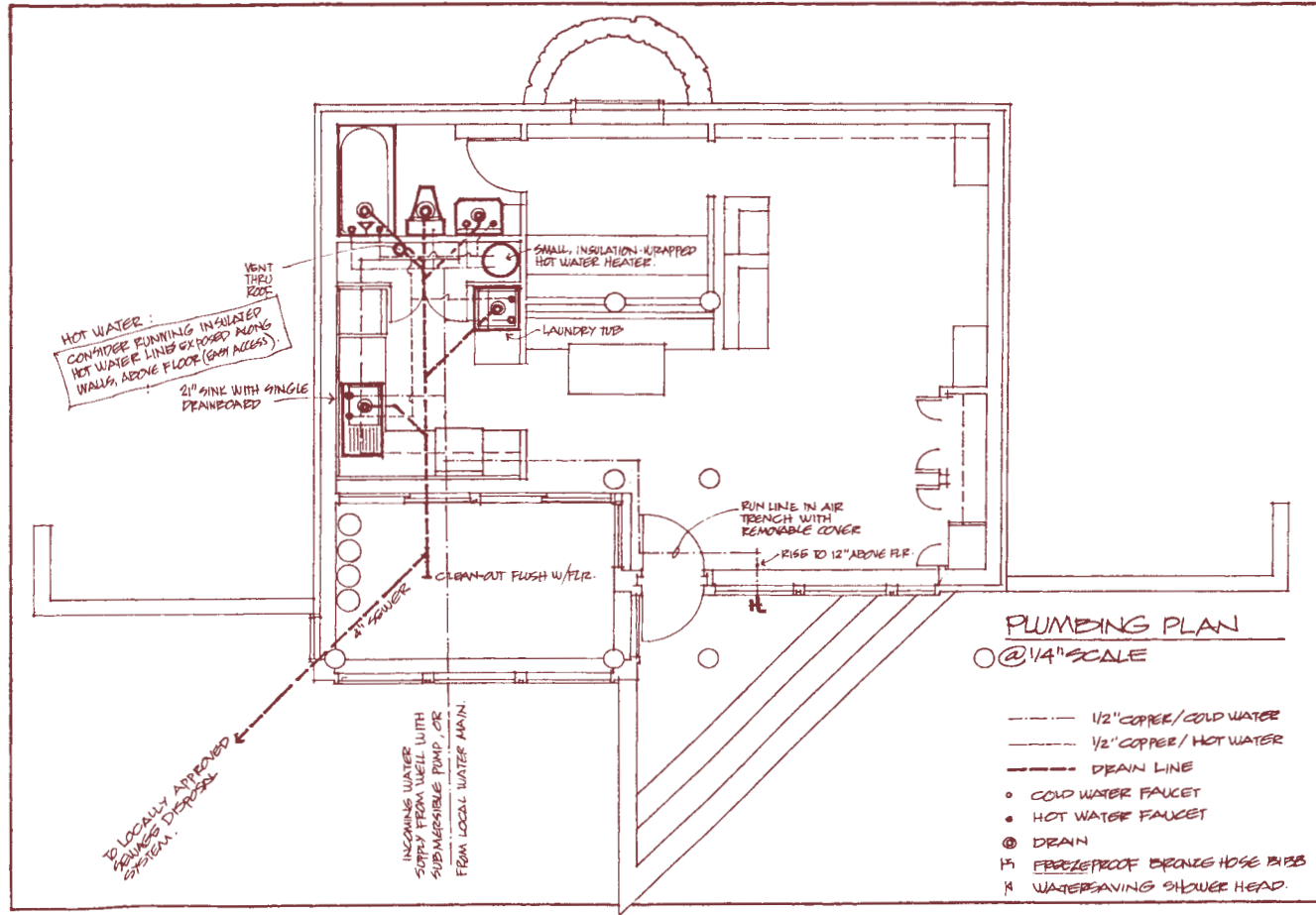




Hermit Cabin



Reprinted from
the pages of
*A Natural System
of House Design*
by Charles G. Woods, AIA



designed by: Charles G. Woods

**Natural
Architecture**

DATE:	SCALE:	BY:	REV.
PLAN NO.	DRAWING NO.	10	

CHARLES G. WOODS, AIA & ASSOCIATES
65 Commercial Street • Honesdale, PA 18431 • USA
tel: 570.253.5452 e-mail: sp1noza@ezaccess.net
www.cgwaia.com

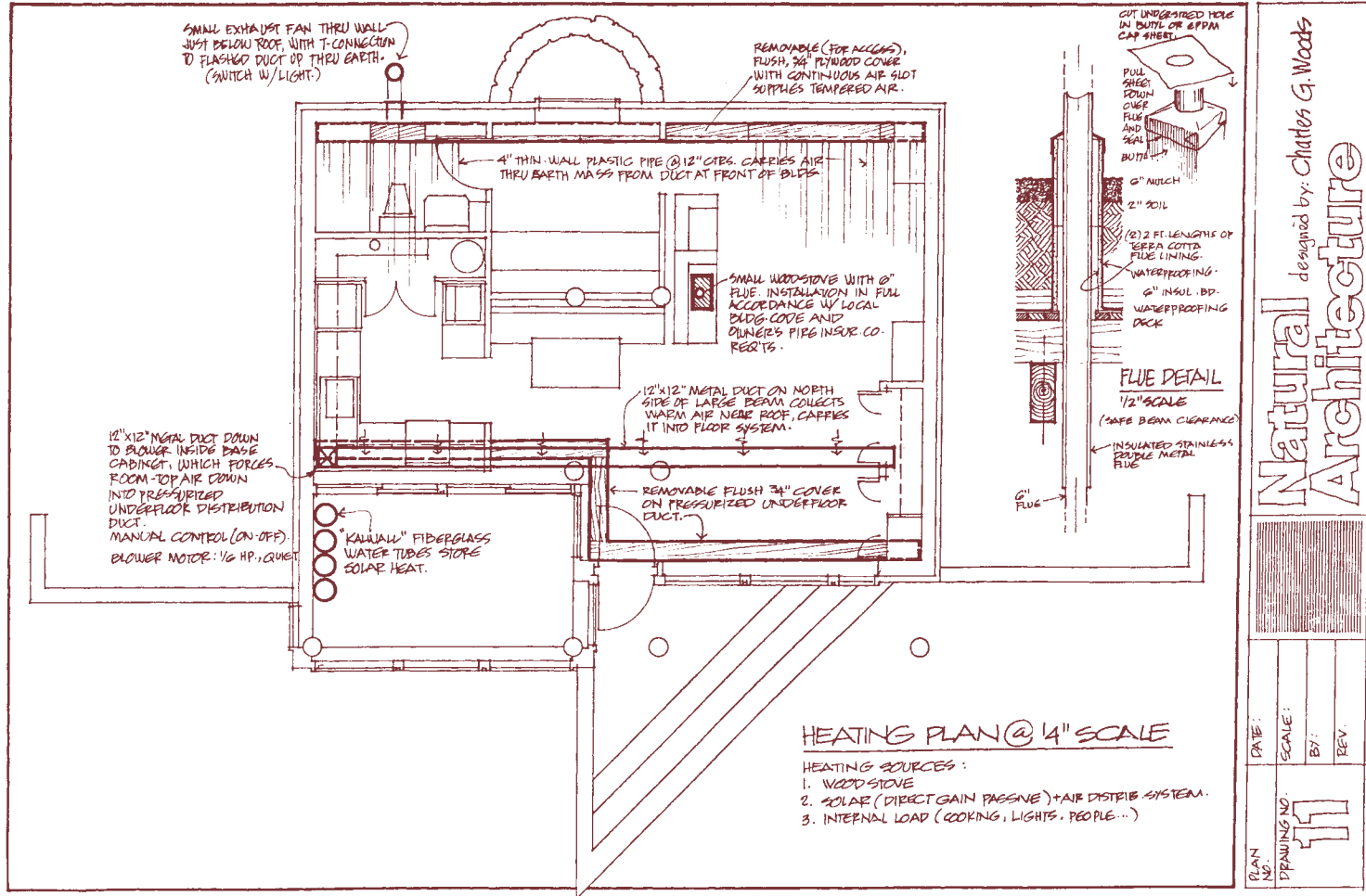




Hermit Cabin



Reprinted from
the pages of
*A Natural System
of House Design*
by Charles G. Woods, AIA



designed by: Charles G. Woods
**Natural
Architecture**

CHARLES G. WOODS, AIA & ASSOCIATES
65 Commercial Street • Honesdale, PA 18431 • USA
tel: 570.253.5452 e-mail: sp1noza@ezaccess.net
www.cgwaia.com

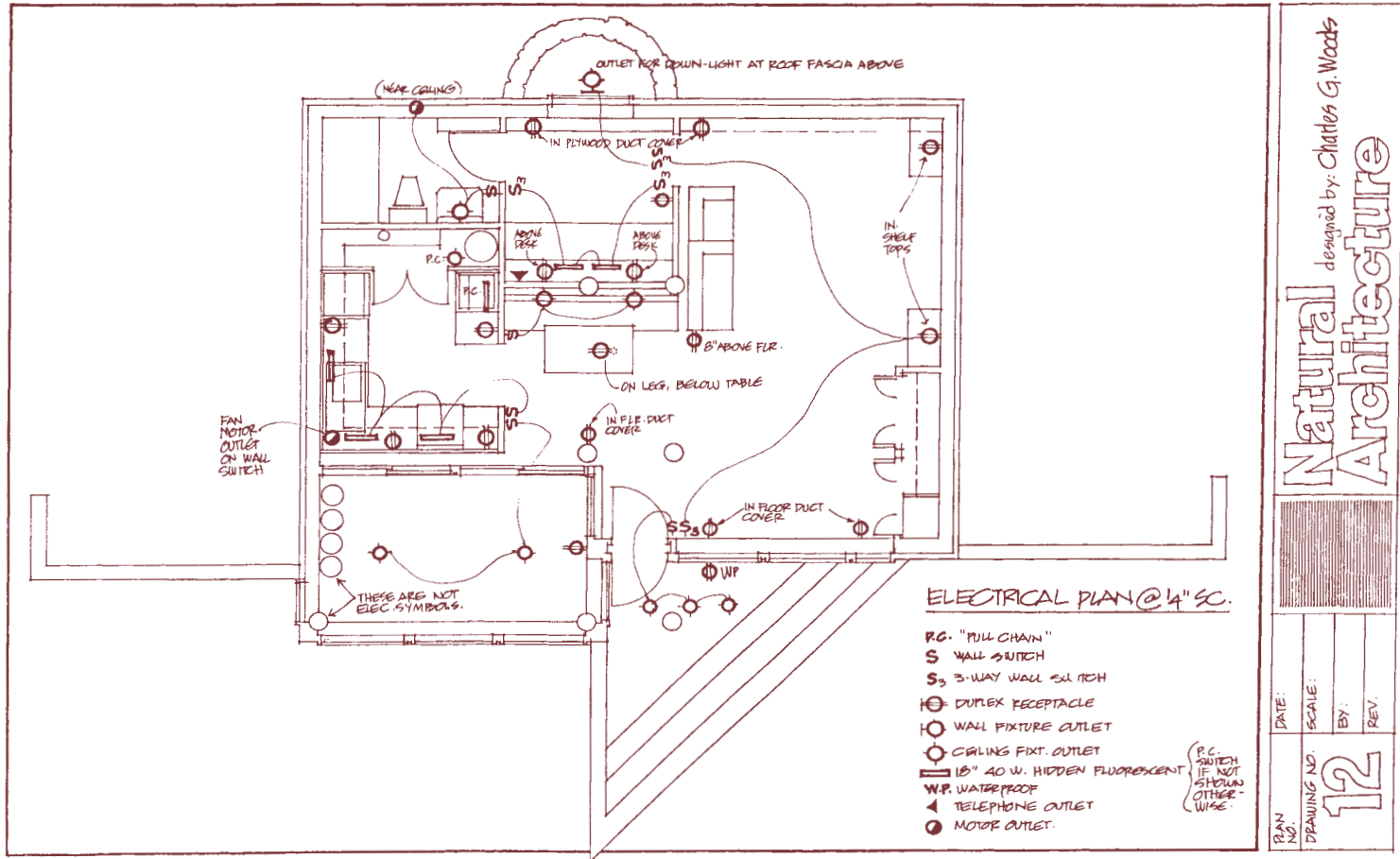




Hermit Cabin



Reprinted from
the pages of
*A Natural System
of House Design*
by Charles G. Woods, AIA



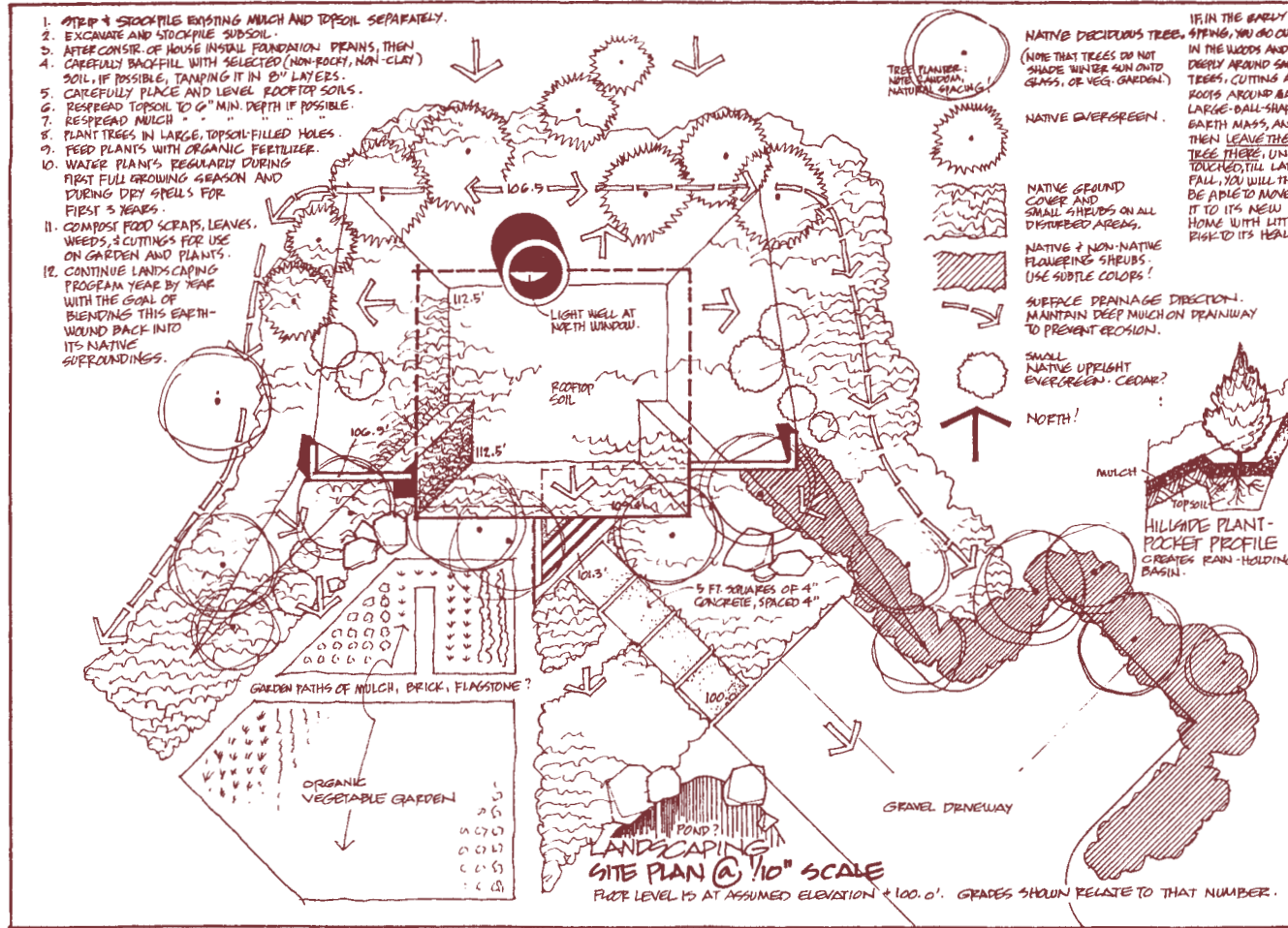
CHARLES G. WOODS, AIA & ASSOCIATES
 65 Commercial Street • Honesdale, PA 18431 • USA
 tel: 570.253.5452 e-mail: sp1noza@ezaccess.net
 www.cgwaia.com



Hermit Cabin



Reprinted from
the pages of
*A Natural System
of House Design*
by Charles G. Woods, AIA



designed by: Charles G. Woods

Natural Architecture

DATE:	SCALE:	BY:	REV:
PLAN NO.:	13		

CHARLES G. WOODS, AIA & ASSOCIATES
 65 Commercial Street • Honesdale, PA 18431 • USA
 tel: 570.253.5452 e-mail: sp1noza@ezaccess.net
 www.cgwaia.com



Hermit Cabin



Reprinted from
the pages of
*A Natural System
of House Design*
by Charles G. Woods, AIA

.... MORE OUTLINE SPECIFICATIONS... AND A MATERIALS LIST....

XI. LANDSCAPING

A. AVOID HARD EDGES AT BOUNDARIES OF THE WORK. LET THE LANDSCAPE APPEAR TO FLOW NATURALLY FROM ITS SURROUNDINGS.

XII. APPLIANCES

A. BE SURE THESE ARE PROVIDED FOR; MAKE SURE, BEFORE SIGNING CONTRACT, WHETHER OWNER OR CONTRACTOR IS TO SUPPLY THEM. INSTALLATION IS TO BE BY CONTRACTOR.

XIII. PLUMBING

A. SOL VENTS: PVC, WATER PIPING: COPPER.
B. FIXTURES: AMERICAN STANDARD, CRANE, KOHLER, OR EQUAL.
C. HOT WATER HEATER: 40 GALLON GLASS-LINED, SUPERINSULATED. FUEL: OWNER'S OPTION.

XIV. HEATING, VENTILATING

A. IF THE HOUSE IS VERY TIGHTLY BUILT, IT WILL BE NECESSARY TO INSTALL AN AIR-TO-AIR HEAT EXCHANGER (MINIMUM SIZE) FOR ADEQUATE VENTILATION.
B. BASIC SYSTEM SHOWN IS SOLAR + WOOD. THIS MAY HAVE TO VARY DEPENDING ON QTY'S OF BOTH. A GROUND WATER HEAT PUMP MAY BE MORE EFFICIENT IN SOME REGIONS.
C. EXHAUST FAN: BRON, NUTONE, OR EQUAL.
D. WOODSTOVE: BY OWNER, INSTALL BY CONTR.
E. WATER TUBES: KALWALL CORP., MANCHESTER, N.H.

XV. ELECTRICAL

A. MAIN SERVICE: 100 AMPS.
B. ALL WIRING: ROMEX COPPER.
C. INSTALL FIXTURES (FURNISHED BY OWNER).
D. FULLY GROUND ENTIRE SYSTEM.

SPECIAL NOTE:
EVERY ATTEMPT HAS BEEN MADE IN THE PREPARATION OF THESE DRAWINGS TO AVOID MISTAKES, BUT THE MAKER CANNOT GUARANTEE AGAINST HUMAN ERROR. THE CONTRACTOR ON THE JOB MUST CHECK ALL DIMENSIONS AND OTHER DETAILS AND BE RESPONSIBLE FOR SAME.

MATERIALS NEEDED

NOTE: THAT CONCRETE AND TIMBER STRUCTURES MUST BE DESIGNED BY A LOCAL ARCHITECT OR ENGINEER, TO MEET LOCAL CONDITIONS AND REQUIREMENTS. THE STRUCTURAL QTY'S SHOWN HERE ARE, LIKE ALL OTHER QUANTITIES, FOR ESTIMATING PURPOSES ONLY.

1. BATTER BONDS FOR LAYOUT, 2x4's	80 BD. FT.	D. WINDOWS, AS SHOWN	11 UNITS.
2. FOUNDATION DRAIN		E. CABINETS, COUNTERS, BUILT-INS	- AS DETAILED
A. PIPE, 4"	± 150 LIN. FT.	F. 2x8 SHELVES, NORTH WALL	60 BD. FT.
B. CRUSHED STONE (3/4"-1 1/2")	11 CU. YDS.	G. 2x6 SUPPORTS FOR SAME	30 " "
C. HAY COVERING	4 BALES	H. 2x6 SHELVES ON BEAMS	210 " "
3. CONCRETE		I. 1/2" Ø BARS FOR SAME:	105 LIN. FT.
A. WALL FTGS, INCL. RET. WALLS	9 CU. YDS.	7. ROOFING, WATER-PROOFING:	
B. INTERIOR FTGS & PEDESTALS	4 " "	A. 1/16" BUTYL OR EPDM	1800 SQ. FT.
C. 8" THICK WALLS, INCL. RET.	26 " "	B. FIBERGL. REINF. VAP. BARR.	750 " "
D. FILL AT TOP OF WALLS	2 " "	C. 6 MIL. VAP. BARR.	200 " "
E. INTERIOR FLOOR SLAB	7 1/2 " "	8. INSULATION	
F. EXTERIOR SLABS.	1 1/4 " "	A. 6" FIBERGL. BATTS	1 ROLL
G. EXTERIOR STEPS	4 " "	B. POLYSTYRENE BOARD, EXTRUDED	
H. 1/2" Ø BARS	750 LIN. FT.	ROOF	4000 BD. FT.
4. MISC. METAL		WALLS	3500 " "
A. 1/4" PLATE, VARIOUS SIZES	60 SQ. FT.	UNDERFLOOR	1200 " "
B. 3/4" x 4" GALV. LAG SCREWS	120	9. CEM. PLASTER, GALV. LATH, 5/8"	17 SQ. YDS.
C. 3/4" x 10" GALV. THRU-BOLTS	80	10. W/STRIPPING @ ENTRANCE	20 LIN. FT.
5. CARPENTRY		11. FLATS/PNE FOR SKYWELL, FACE AREA: 120 SQ. FT.	
A. 3" DOUBLE-TONGUE ROOF DECK, DRILLED	2600 BD. FT.	12. GRAVEL FOR ENTRY AREA	1/3 CU. YD.
B. 4x12 ROOF JOISTS	1560 " "	13. COPPER CAPS, 1/6" Ø, PROTECTING BMS.	6 SQ. FT.
C. 1/2" PLYWOOD DECK (GANGS)	840 SQ. FT.	14. GLASS, GLAZINGS, MIRRORED MOD. CAB - AS SHOWN.	
D. 3x16 ROOF BEAMS	960 BD. FT.	15. FINISHES	
E. 3x12 JOIST HEADERS	180 " "	A. WALLS, CONCRETE ...	- NONE
F. COLUMNS, 10" Ø x 7'-0"	8	PLASTERBOARD ...	- 2 COAT LATEX, FLAT
G. 8" GALV. SPIKES FOR 4x12's	160	TIMBERS → DECK	- NONE
H. DECK SPIKES - SUPPLIED WITH DECK		FLOOR: STAIN/SEALER	
I. NAILS - VARIOUS SIZES		MILLWORK: STAIN'S SEAL	
J. 2x6 FASCIA/DRIP PC's	40 BD. FT.	CABINETS: GLOSSY ENAMEL.	
K. 2x3 STUDS FOR PTNS.	300 " "	EXTERIOR MATLS. - NONE	
L. 2x4 STUDS, MISC. FRAMING - AS REQ'D.		16. PLUMBING	- AS SHOWN.
M. BLOCKING	- " "	WATER-SAVING HEAD, FAUCETS.	
N. SMALL GALV. BOLTS, MISC. - " "		17. HEATING, VENTILATING	- AS SHOWN
6. MILLWORK		18. ELECTRICAL	- AS SHOWN
A. INT. DOOR, BATH	1	19. LANDSCAPING	- AS SHOWN.
B. EXT. DOOR, ENTRANCE	1		
C. EXT. STORM/SCREEN DOOR	1		

designed by: Charles G. Woods

Natural
Architecture

15

CHARLES G. WOODS, AIA & ASSOCIATES
65 Commercial Street • Honesdale, PA 18431 • USA
tel: 570.253.5452 e-mail: sp1noza@ezaccess.net
www.cgwaia.com

